



Informatii despre ...



Grupuri termice in condensatie CGS



Grupuri termice in condensatie CGS / CGW

Grupuri termice de pardoseala CGS



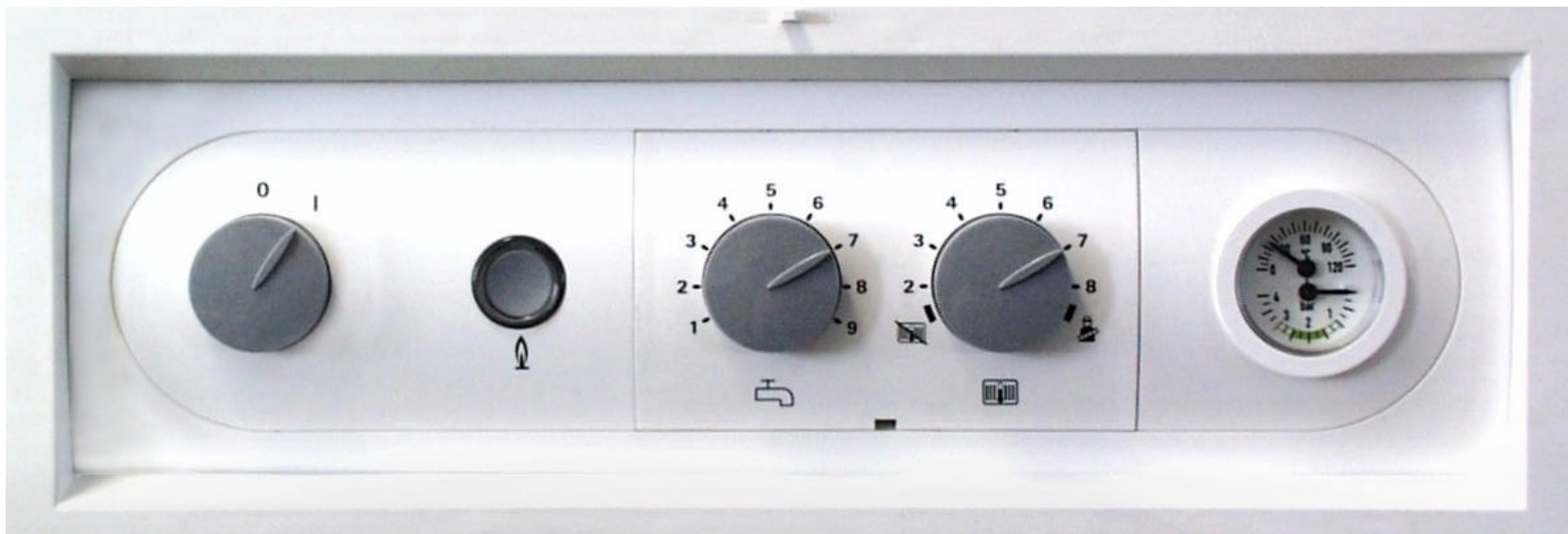
**Centrala in condensatie
cu rezervor de stocare**

**CGS-20/160
CGS-24/200**



**Cu caseta de mascare
(accesoriu)**

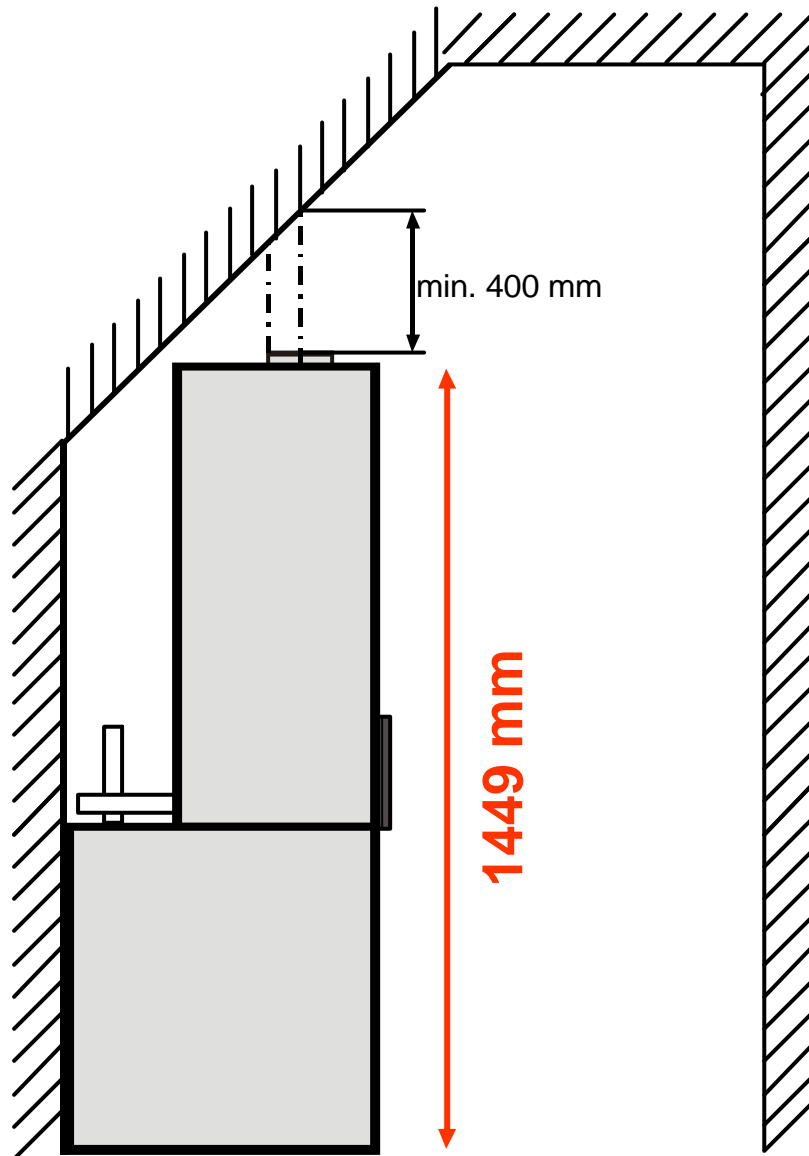
Reglare



CGS Date Tehnice

Grup termic CGS		20/160	24/200
Putere nominala incalzire 80/60°C[kW]		5,6 - 19,0	7,1 - 23,1
Putere nominala incalzire 50/30°C[kW]		6,1 - 20,5	7,8 - 24,8
Putere nominala ACM 80/60°C [kW]		22,9	27,6
Rezervor de stocare			
Capacitate rezervor	[ltr]	90	90
Debit continuu ACM	[ltr./h]	563	681
Timp preparare ACM 10/60°C	[min]	16	12
Consum gaz metan E/H	[N]	2,1	2,5
Consum	[kWh/24h]	1,1	1,1
Debit suplimentar ACM 10/45 °C (l/10min)		199	216

CGS

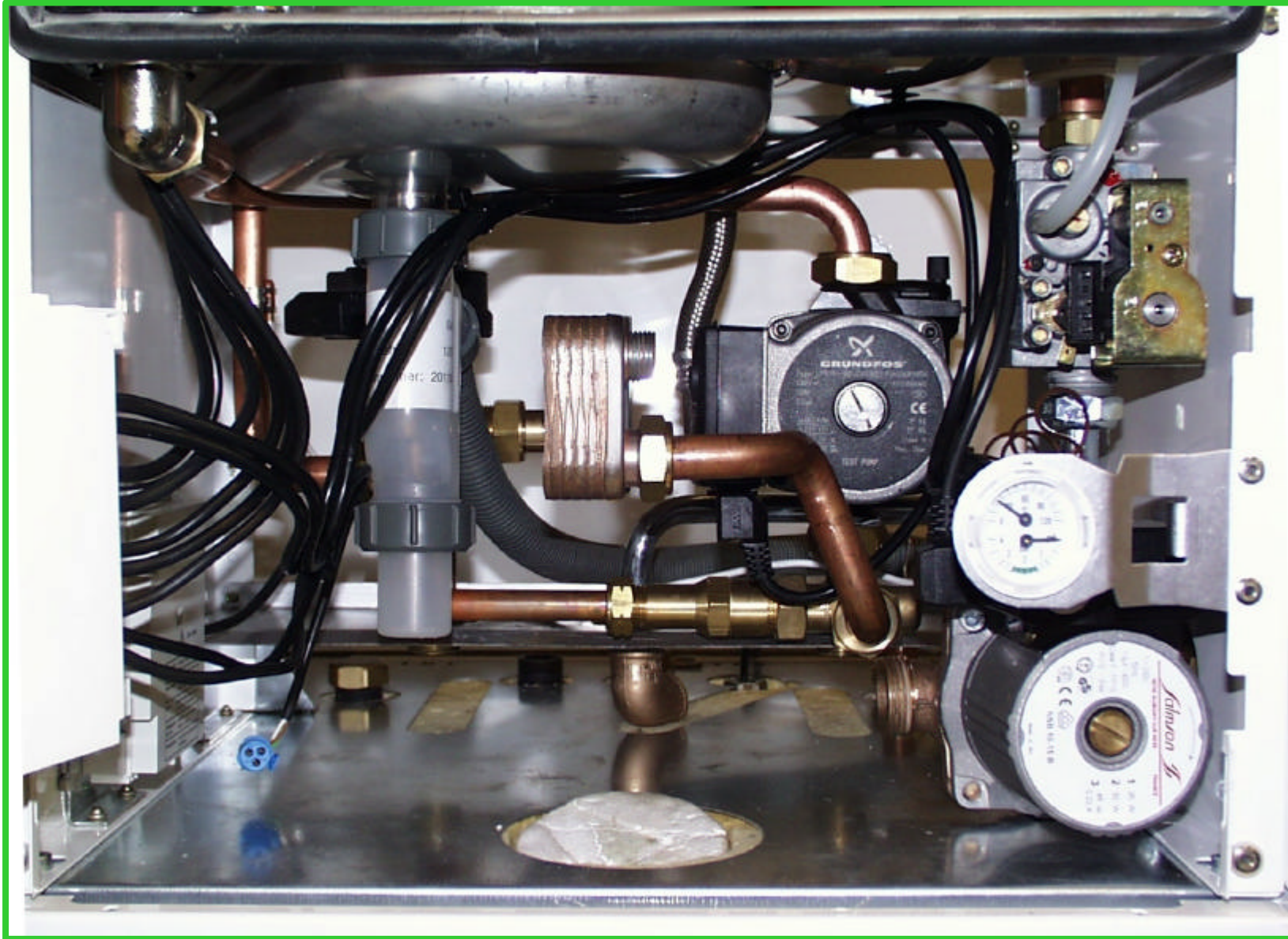


Inaltime redusa!

Poate fi instalat sub plafoane inclinate

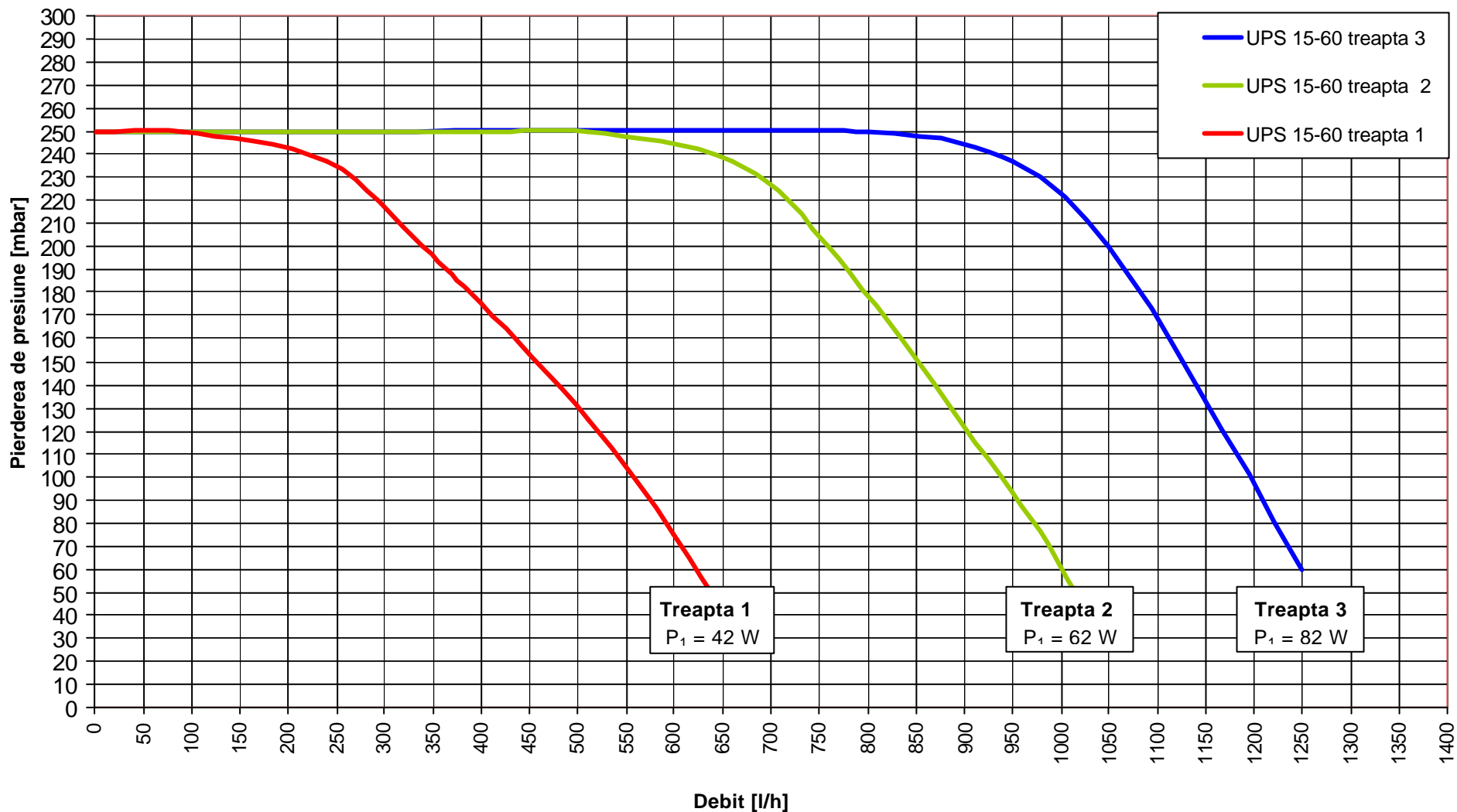
Rezervor + Centrala termice
separabile (47kg + 52kg)

Hidraulica



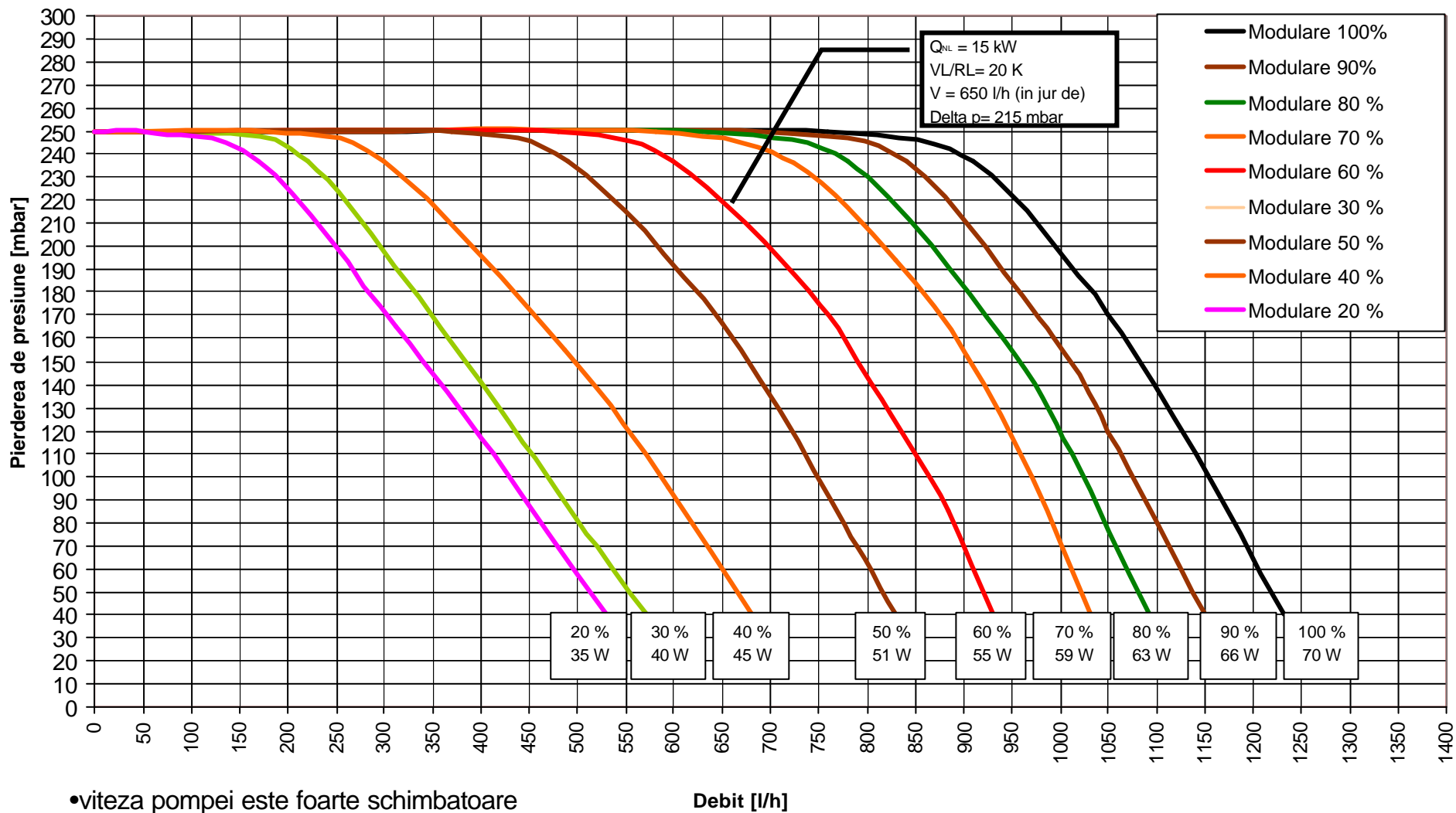
Caracteristica cazanului cu pompa cu trei trepte de turatie

Pierderea de presiune - pompa cu trei trepte de turatie



Caracteristica cazanului cu pompa cu turatie variabila

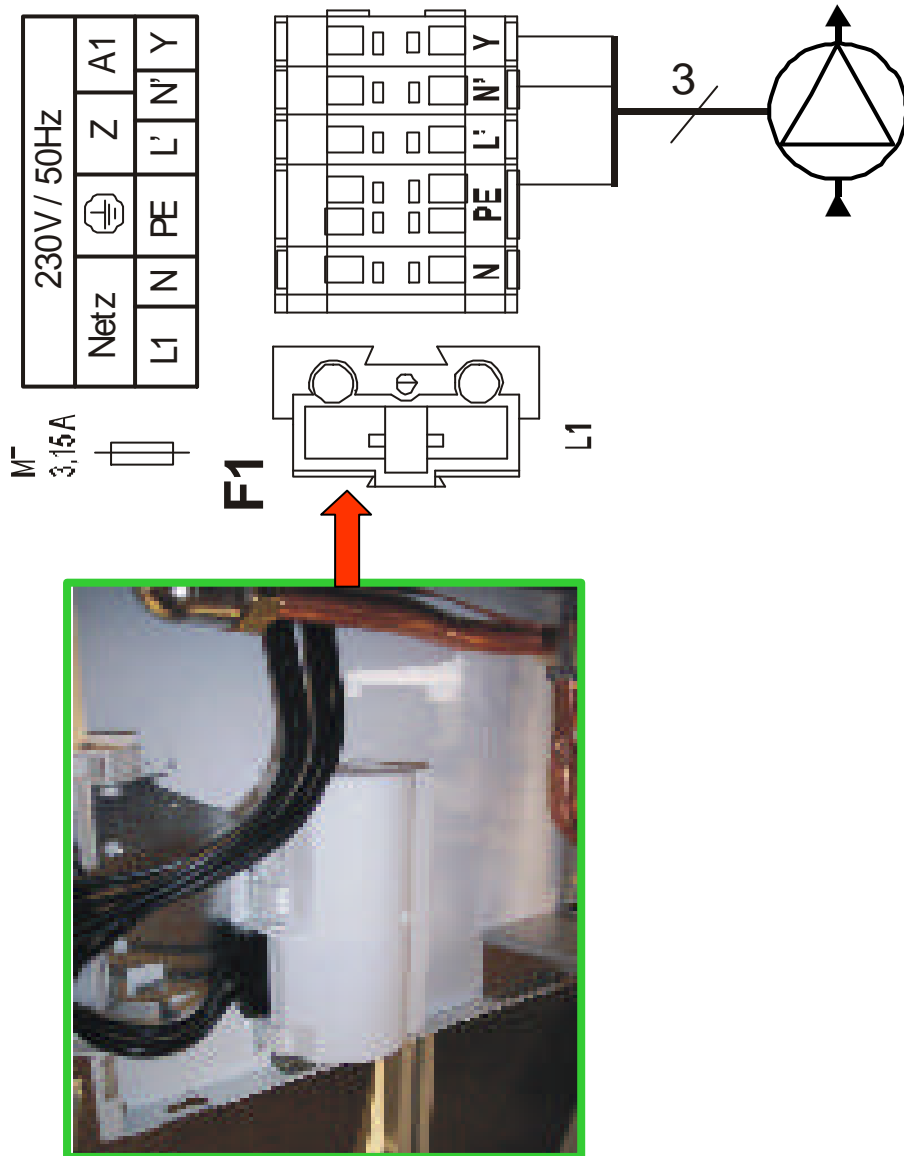
Pierderea de presiune - pompa cu turatie variabila



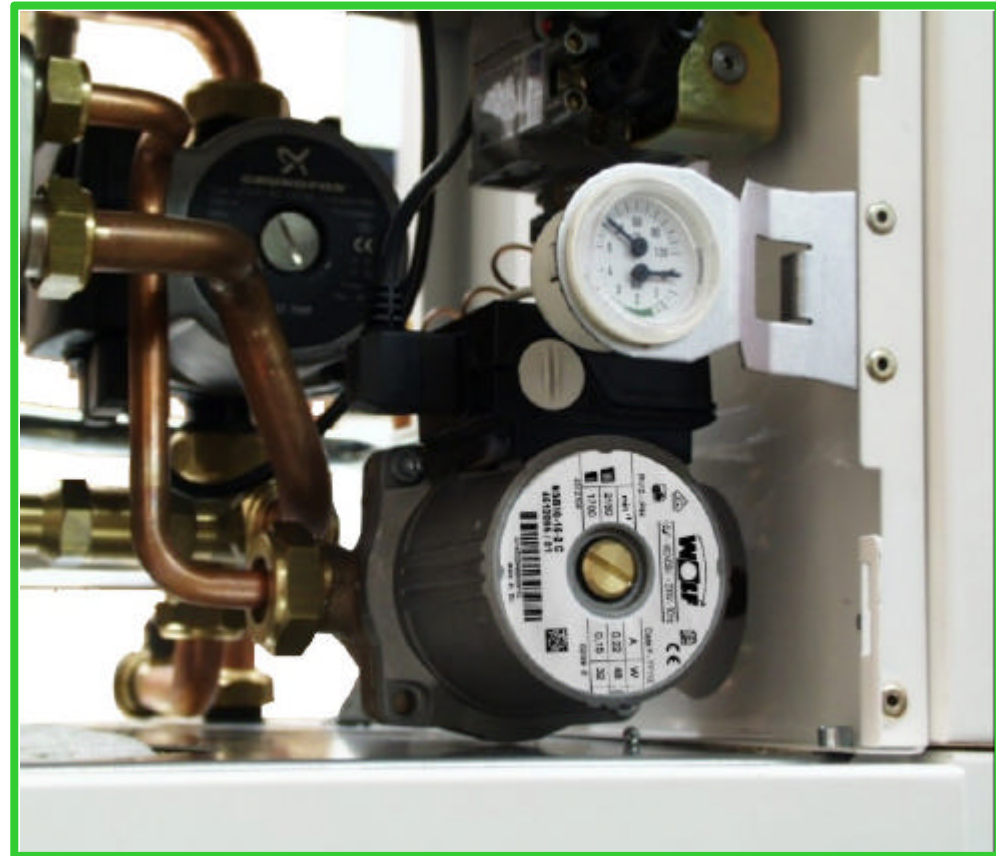
Avantajele unei pompe cu turatie variabila

- **Pompa recupereaza energie printr-un consum redus**
- **Viteza pompei este foarte schimbatoare**
- **Functionare la turatie mica si mare**
- **Incetarea functionarii arzatorului = Pumpe functioneaza la turatie scazuta**
- **Functionare optima in instalatie**
- **Modularea turatie pompei in raport cu performanta**

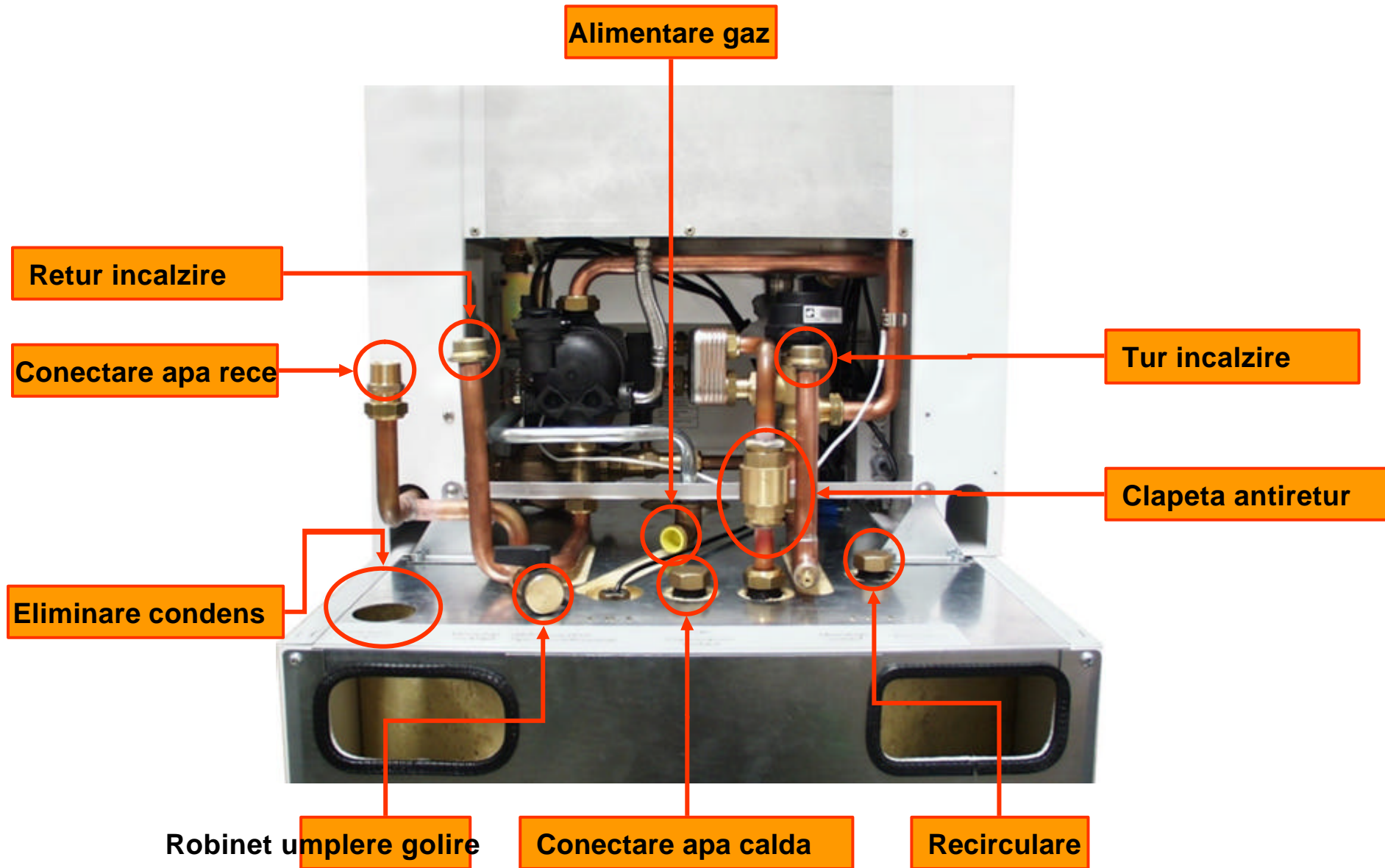
Conectarea electrica a pompei de incarcare rezervor



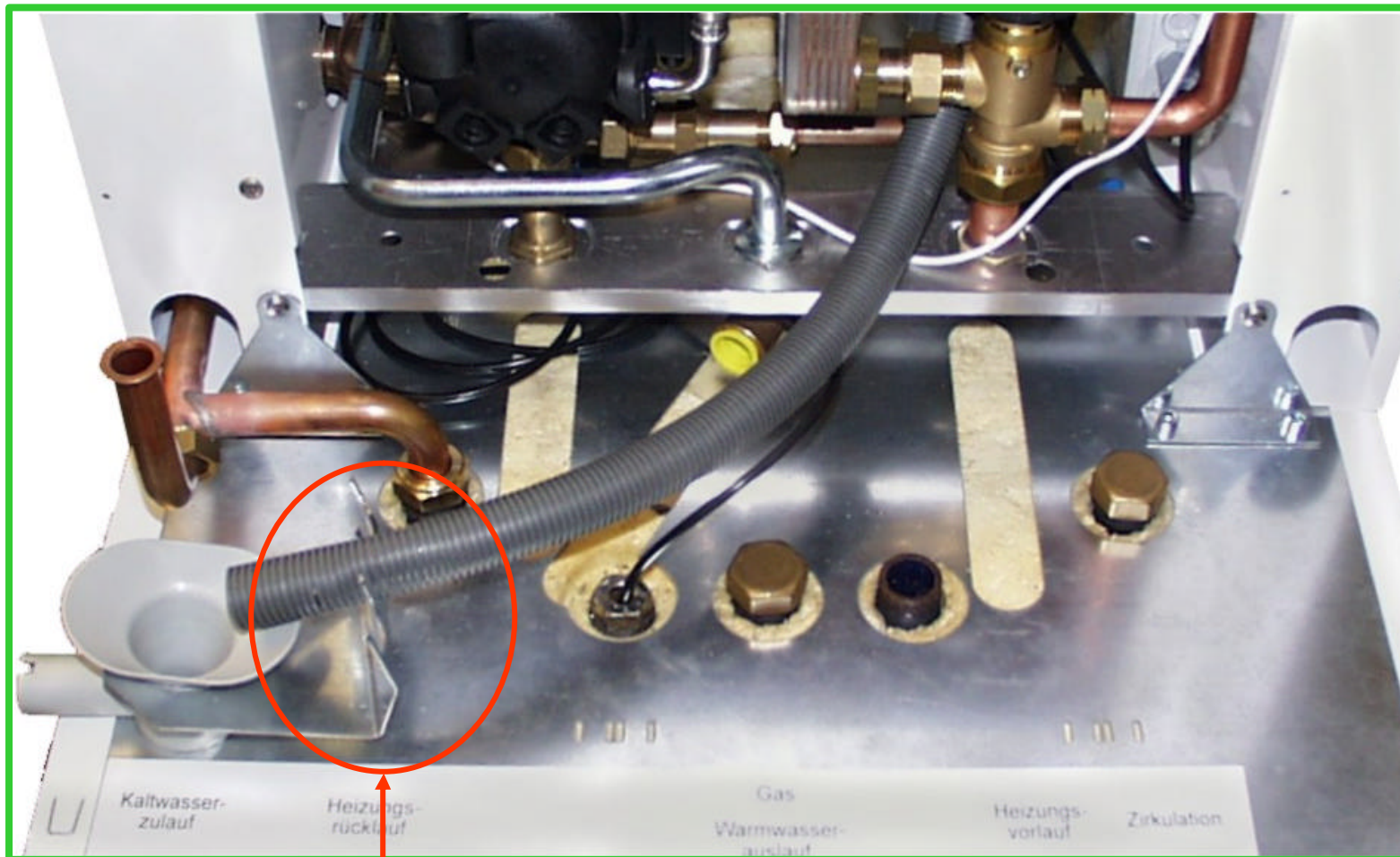
Atentie:
lesirea A1 este pentru
pompa de incarcare rezervor



Elemente hidraulice



CGS



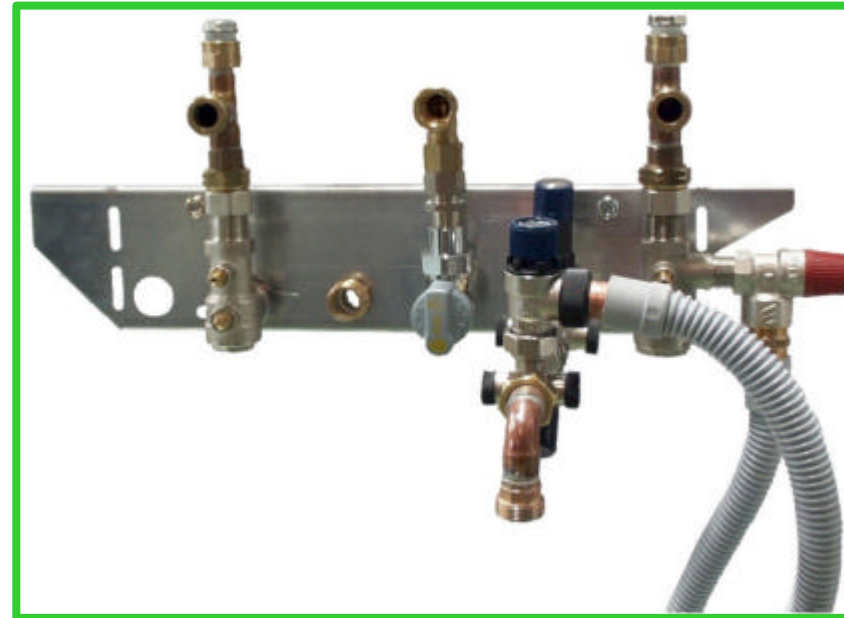
Montaj pentru 3 metri de furtun

Set de conectare CGS

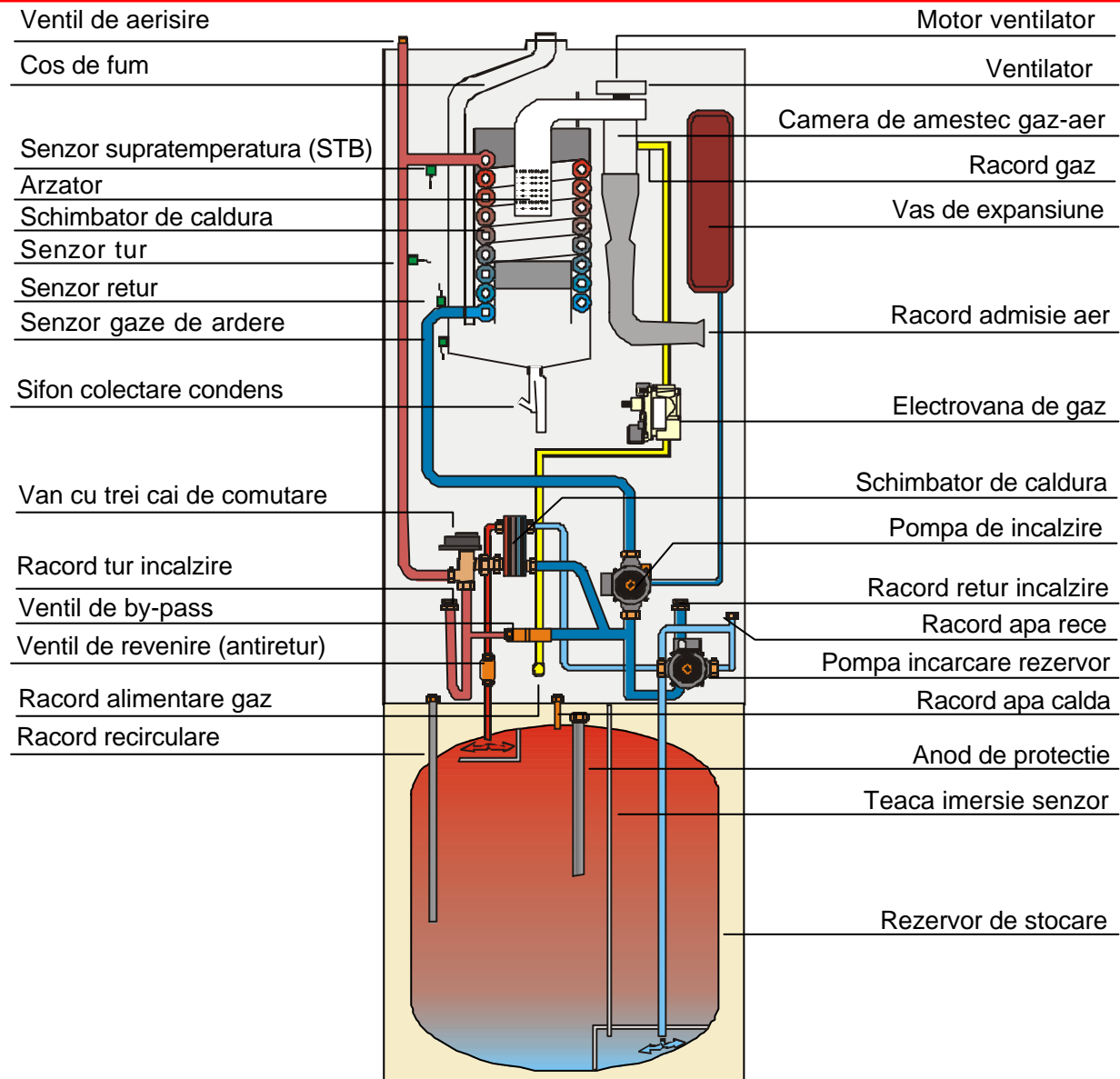
**Set de conectare CGS la instalatie
(montaj aparent sau incastrat)**



Set de conectare CGS la instalatie

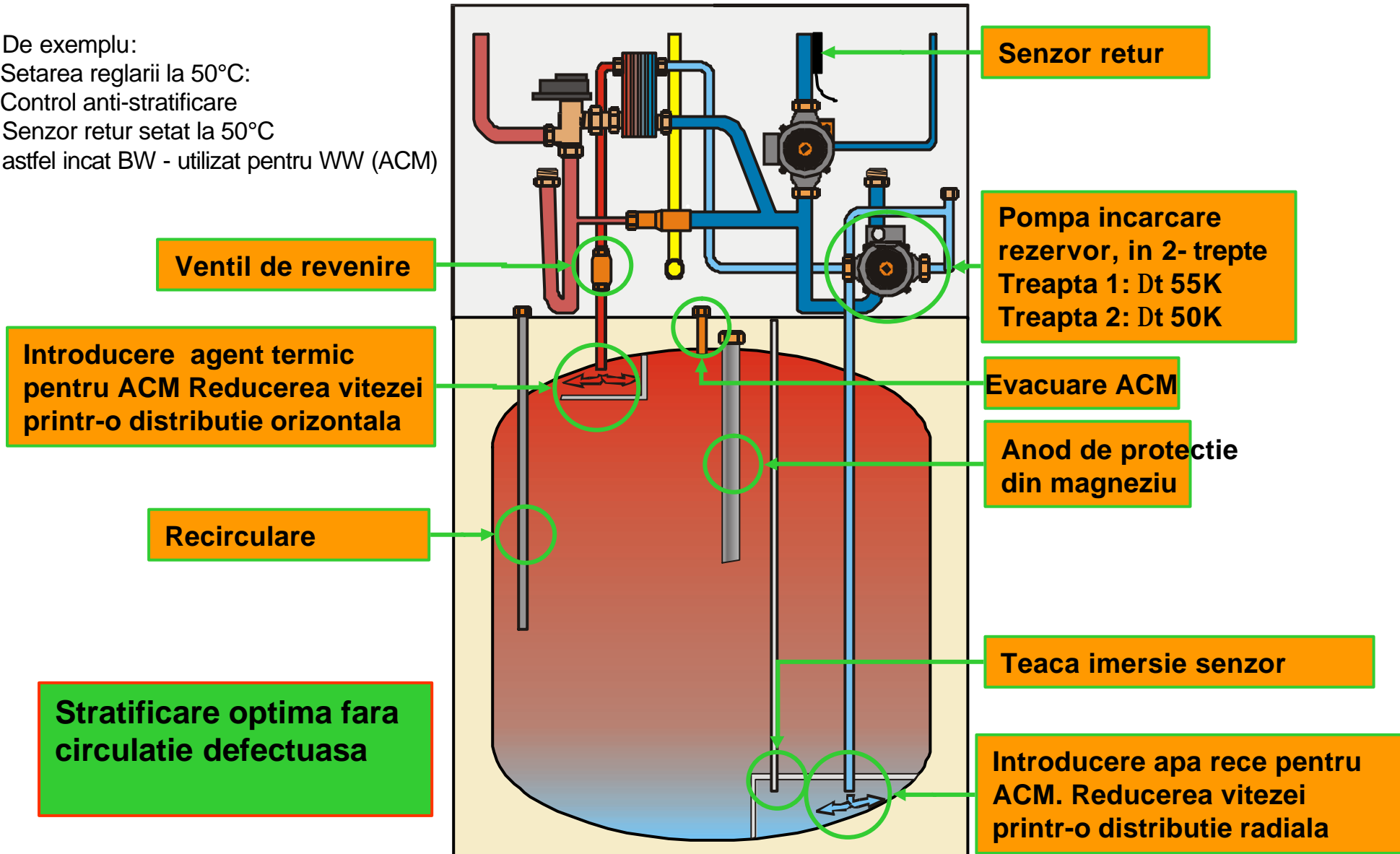


CGS

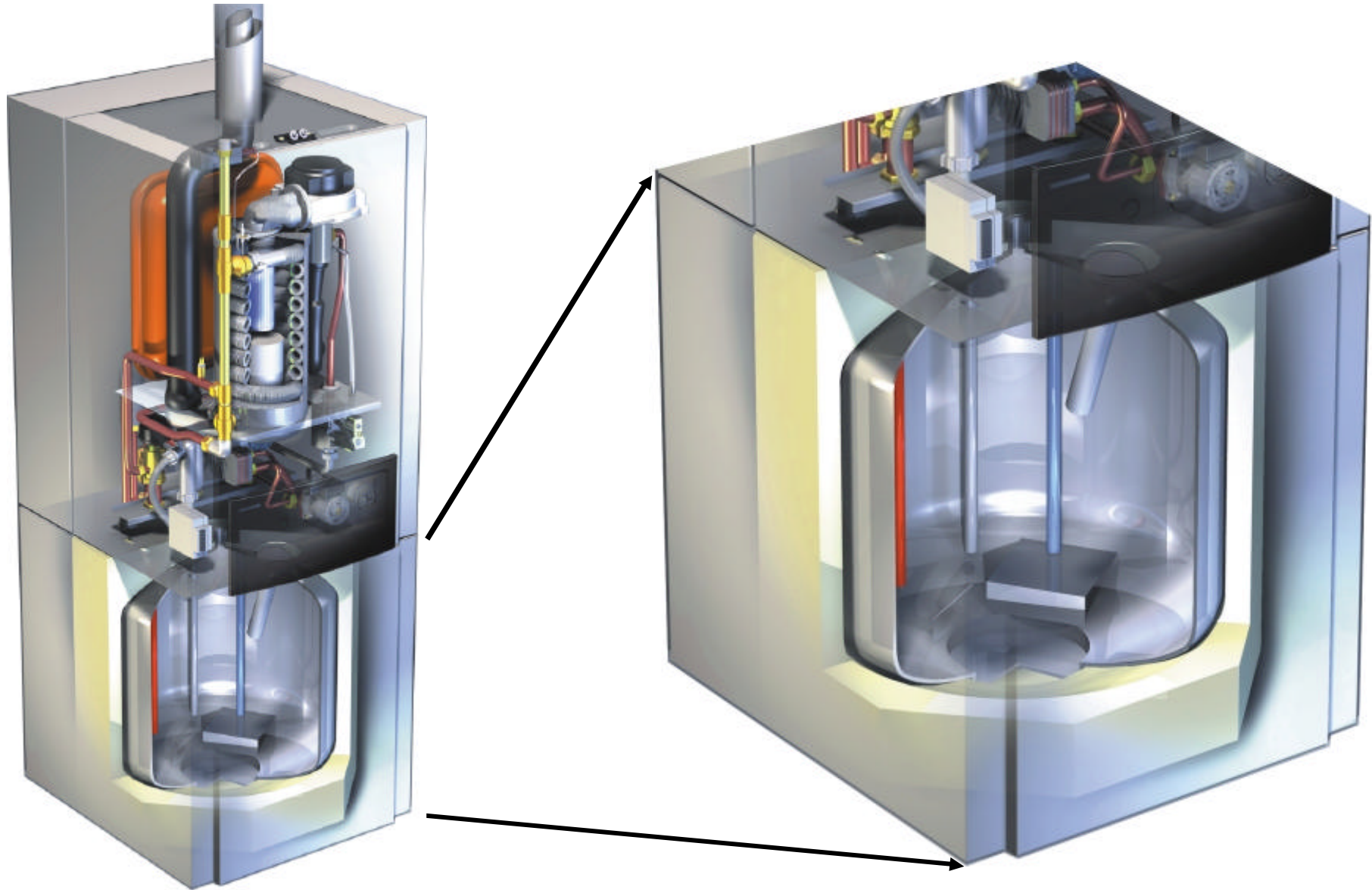


CGS Rezervor de stocare

De exemplu:
Setarea reglării la 50°C:
Control anti-stratificare
Senzor retur setat la 50°C
astfel incat BW - utilizat pentru WW (ACM)

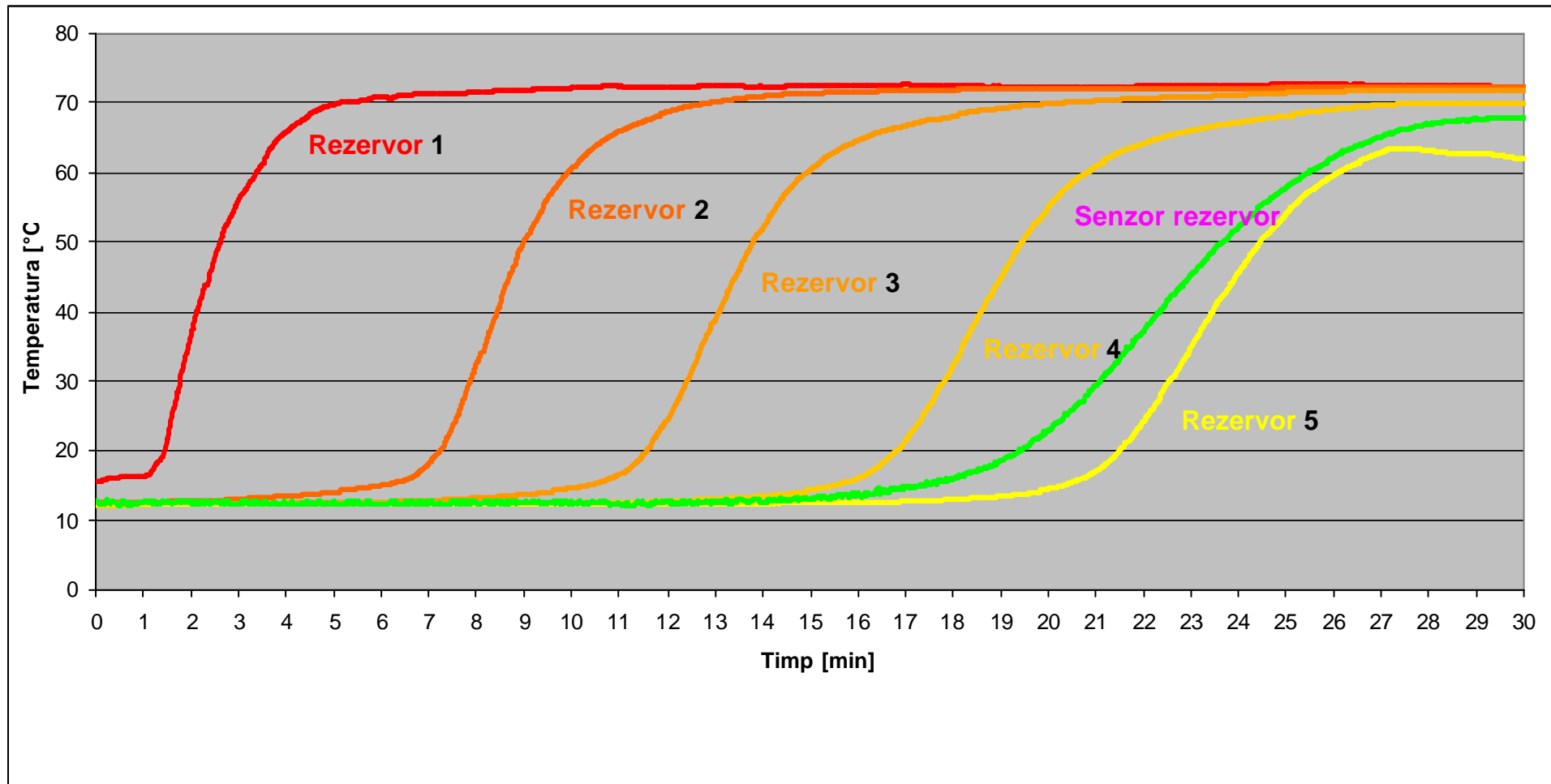


CGS Rezervor de stocare

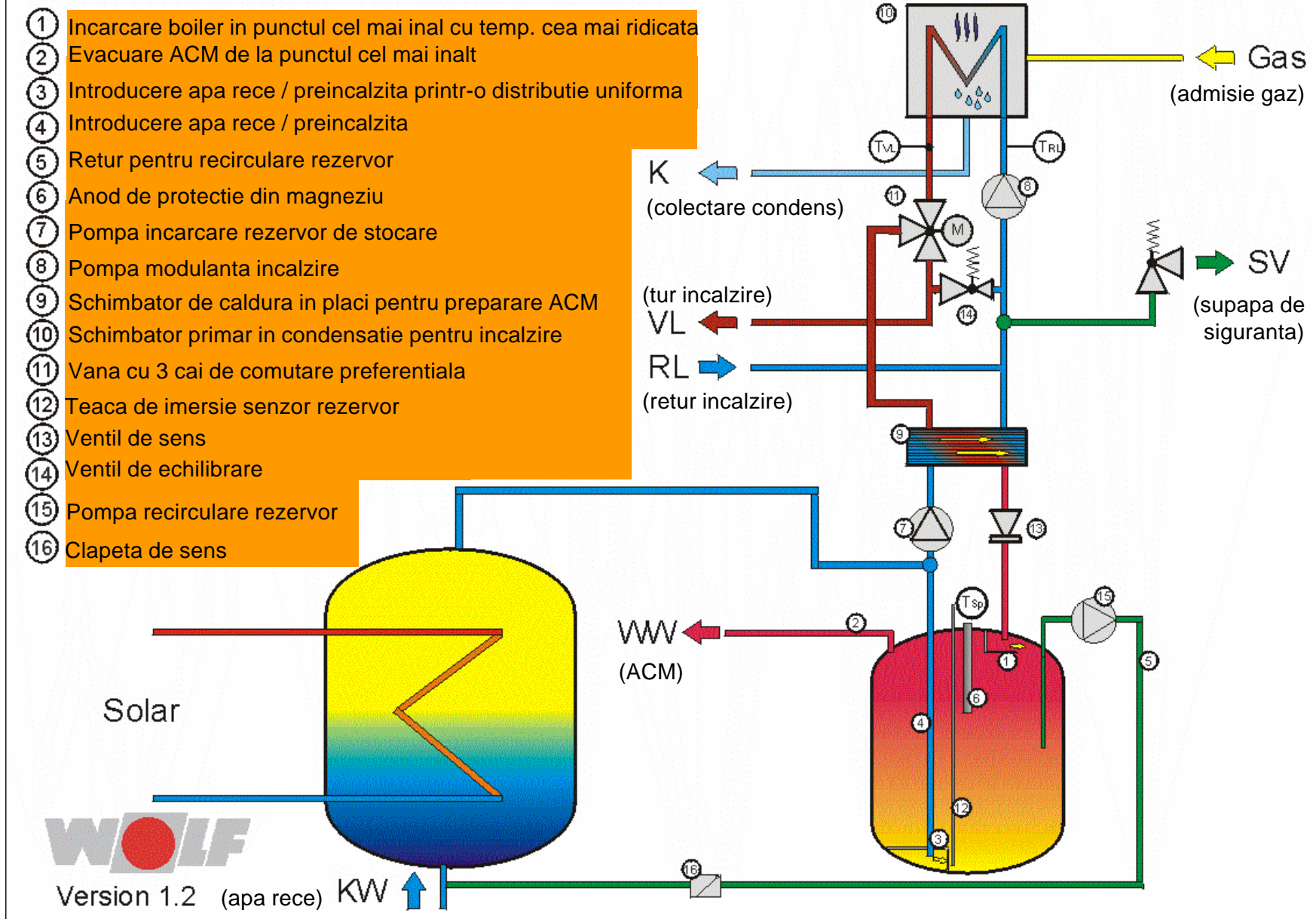


Variatia temperaturii cu incarcarea rezervorului CGS-20/160

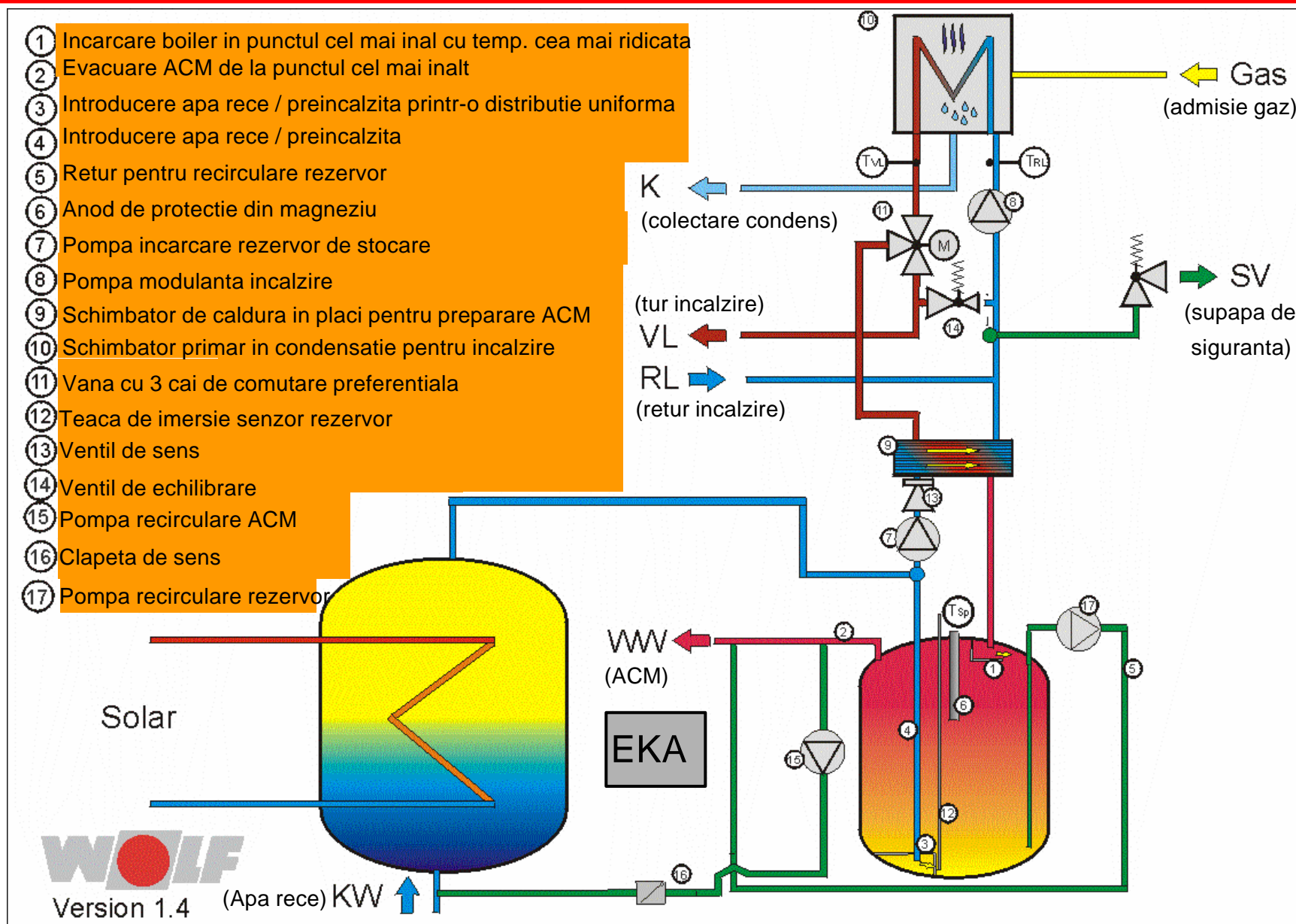
cu stratificare perfecta



Conectarea cu sisteme solare



Conectarea cu sisteme solare



CGS... cele mai importante argumente

- > Tehnologia condensatiei de la CGB
- > Modul inferior - rezervor de stocare
- > Utilizarea sistemului "TurboStop" pentru preparare ACM
- > 90 litri volum rezervor echivalent cu ~ 160/200 litri boiler
- > Dimensiuni reduse 1449x566x597 mm (HxLxl)
- > Greutate redusa 99 kg
- > Set de racorduri hidraulice si de gaz " gata de conectare"
- > Set racorduri hidraulice flexibile din otel (accesoriu)
- > Set de circulatie (accesoriu)
- > Set conectare sisteme solare (accesoriu)

- > Modulul centrala in condensatie separabil de modulul rezervor (Usurinta Transport)



Brandul competent
pentru sisteme de
economisire a energiei

